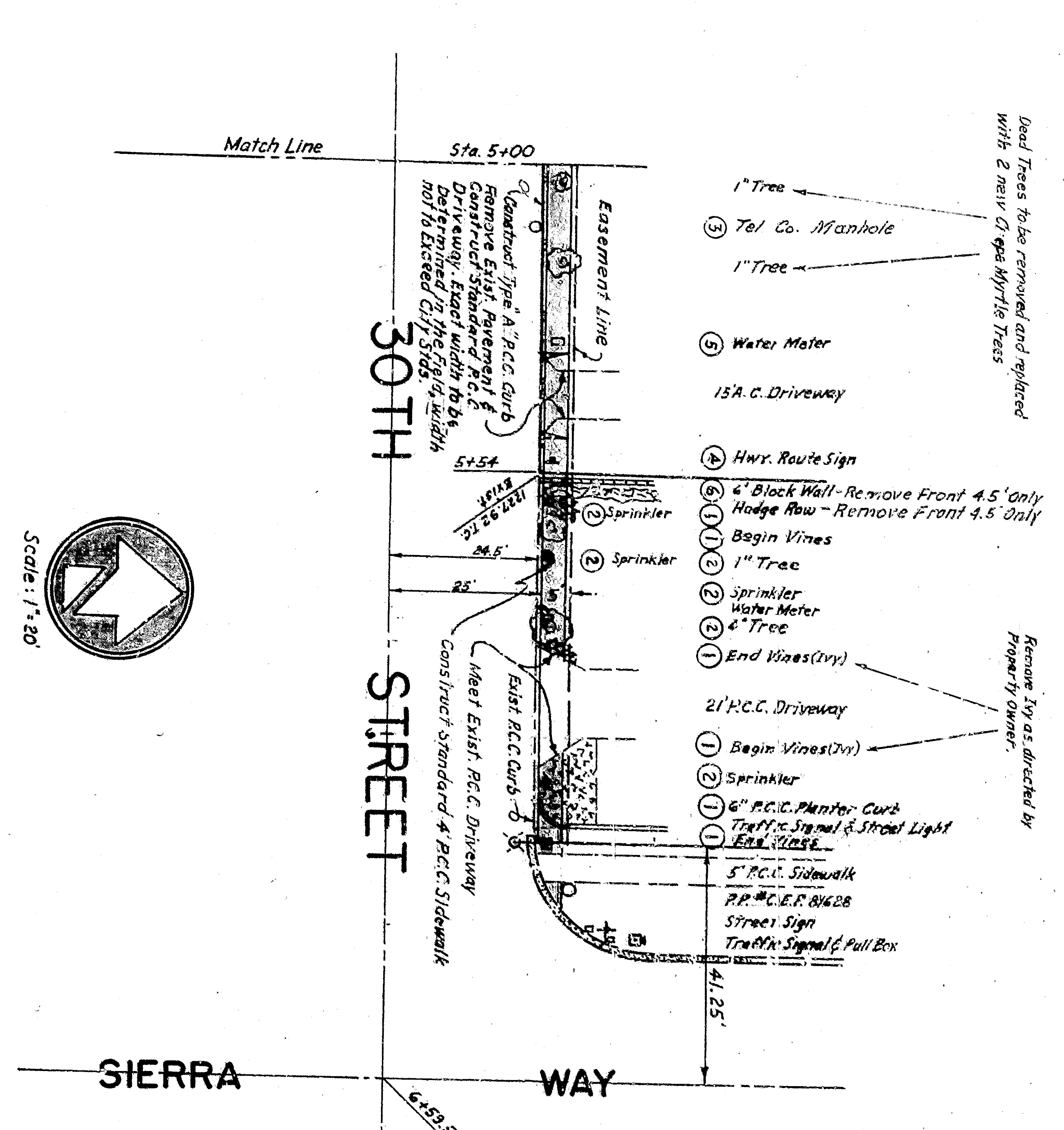
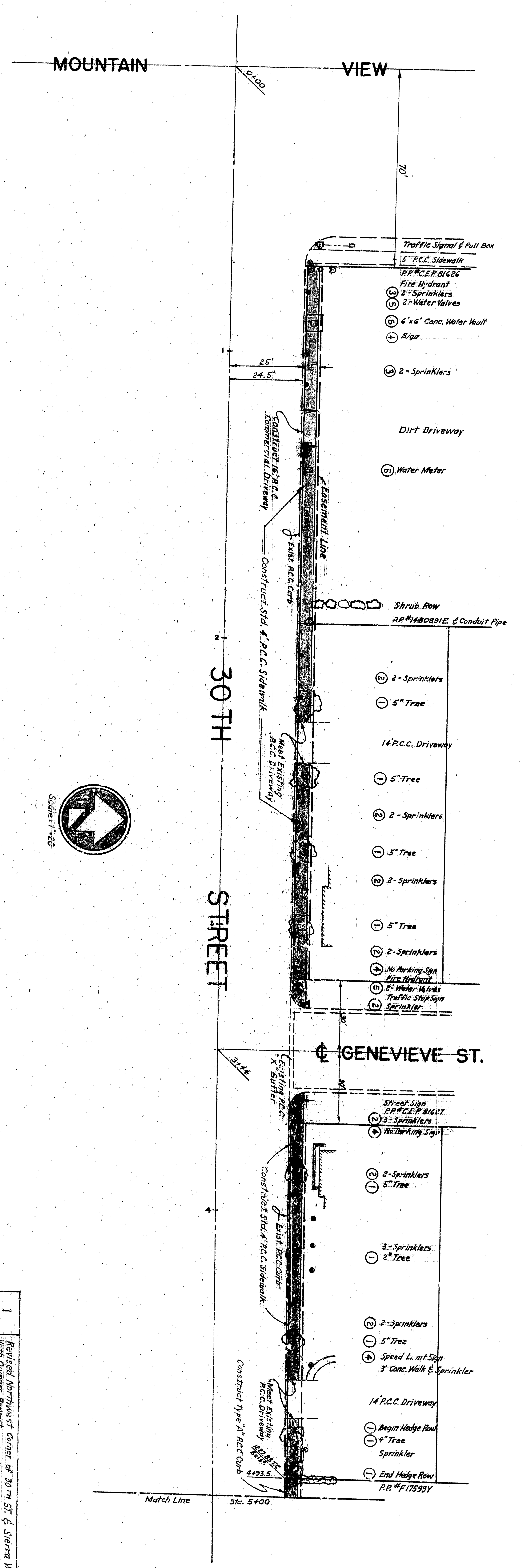


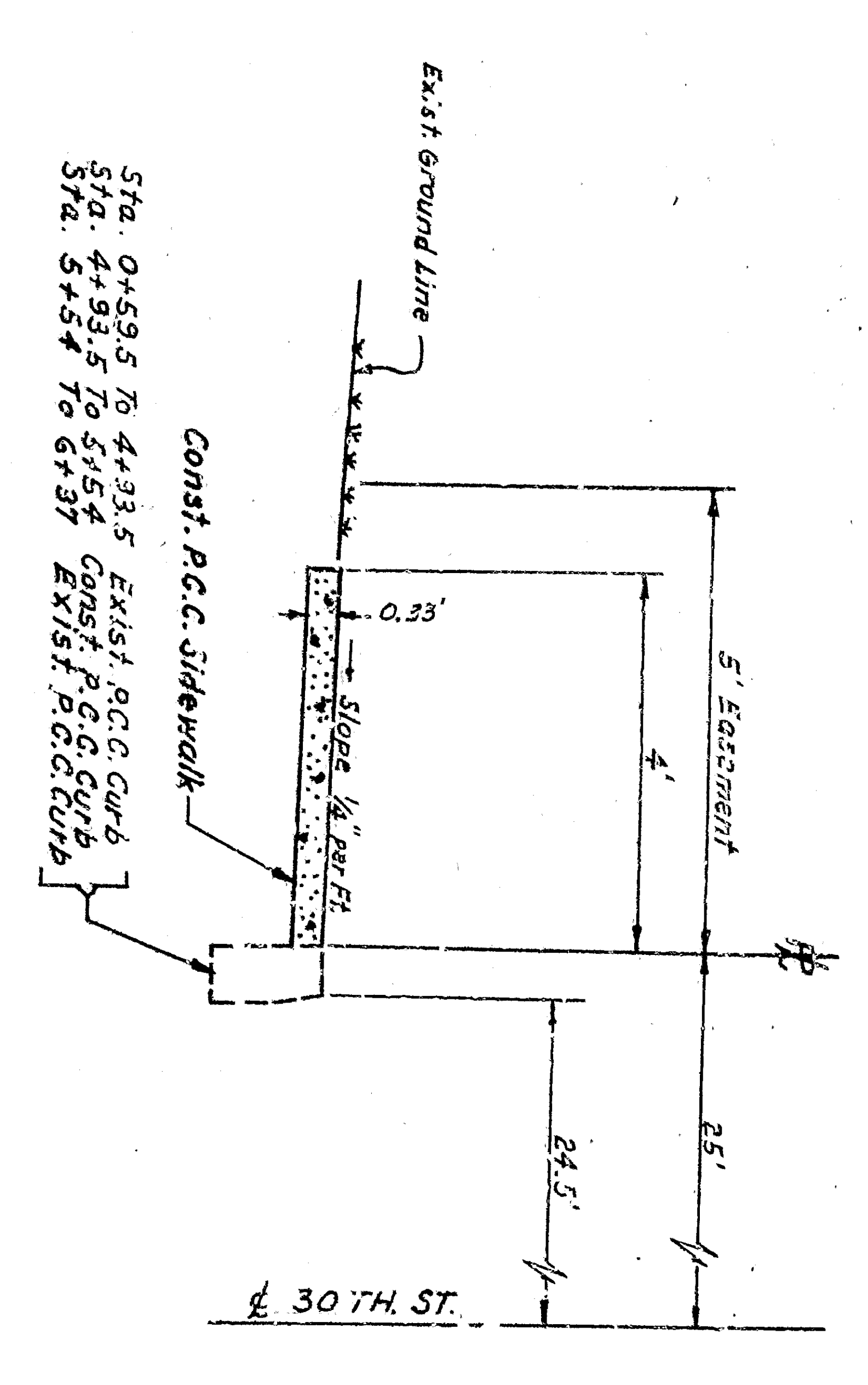
TYPICAL SIDEWALK DETAIL
SCALE: 1" = 2'

- GENERAL NOTES**
- All work including relocations shall be done in conformity with applicable provisions of Standard Specifications for Highway Construction, City of San Bernardino on file in the office of the City Engineer.
 - Payment for all earthwork, grading, and watering shall be included in prices bid for this contract. Items of work and no additional compensation will be allowed for this work.
 - Removal of Obstructions:
 - To be removed under this contract.
 - To be removed or relocated under this contract.
 - To be removed or relocated under this contract. (Footings on Street Signs shall be replaced with concrete same as original installation.)
 - To be removed and replaced to the satisfaction of the Engineer.
 - Existing sprinkler systems, sprinkler heads, and appurtenances in conflict with the new sidewalk shall be relocated and placed in operating satisfactory to the Engineer. Any new material, pipe, etc. required to accomplish the relocation shall be considered part of the relocation work.
 - BENCH MARK: Chisbol "X" on top of east curb at Northeast corner of Mountain View and 30th Street. Elevation: 1222.85 M.S.L.

REVISION	DESCRIPTION	DATE
1	Revised Northwest corner of 30th St. & Sierra Way to comply with current permit.	9/10/17
APPROVED		
CITY OF SAN BERNARDINO		DATE
REGISTERED CIVIL ENGINEER NO. 13653		
DRAWN BY: DIXON BY: Stone		
CHECKED BY: Stone		
SHEET 1 OF 1		
RECOMMENDED BY: Stone		
DEPARTMENT OF ENGINEERING		
NORTH SIDE OF 30TH STREET		
MOUNTAIN VIEW TO SIERRA WAY		
SIDEWALK		



TYPICAL SIDEWALK DETAIL
SCALE: 1" = 2'



GENERAL NOTES

- All work including relocations shall be done in conformity with applicable provisions of Standard Specifications for Highway Construction, City of San Bernardino on file in the office of the City Engineer.
- Payment for all earthwork, grading, and watering shall be included in prices bid for this contract. Items of work and no additional compensation will be allowed for this work.
- Removal of Obstructions:
 - To be removed under this contract.
 - To be removed or relocated under this contract.
 - To be removed or relocated under this contract. (Footings on Street Signs shall be replaced with concrete same as original installation.)
 - To be removed and replaced to the satisfaction of the Engineer.
- Existing sprinkler systems, sprinkler heads, and appurtenances in conflict with the new sidewalk shall be relocated and placed in operating condition satisfactory to the Engineer. Any new material, pipe, etc. required to accomplish the relocation shall be considered part of the relocation work.
- BENCH MARK: Chisbol "X" on top of east curb at Northeast corner of Mountain View and 30th Street. Elevation: 1222.85 M.S.L.

REVISION	DESCRIPTION	DATE
1	Revised Northwest corner of 30th St. & Sierra Way to comply with current permit.	9/10/17
APPROVED		
CITY OF SAN BERNARDINO		DATE
REGISTERED CIVIL ENGINEER NO. 13653		
DRAWN BY: DIXON BY: Stone		
CHECKED BY: Stone		
SHEET 1 OF 1		
RECOMMENDED BY: Stone		
DEPARTMENT OF ENGINEERING		
NORTH SIDE OF 30TH STREET		
MOUNTAIN VIEW TO SIERRA WAY		
SIDEWALK		